

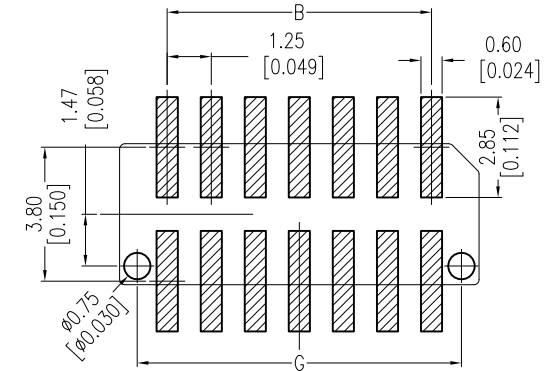
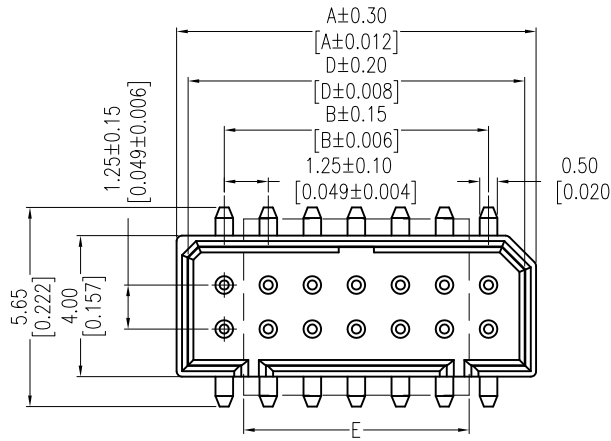
HSF

NOTES:

Voltage Rating: 50V AC/DC
 Current Raing: 0.5AMP
 Contact Resistance: 20mΩ max
 Withstand Voltage: 500V AC/Minute
 Insulation Resistance: 500MΩ min
 Operation Temperature: -40°C to +105°C

Contact Material: Brass
 Contact Plating: Sn OR Au OVER Nickel
 Insulator Material: PA9T+33%GF UL94V-O BLACK

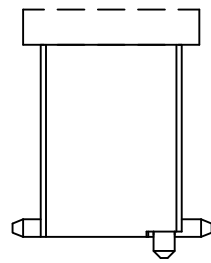
Recommended P.C.B Layout (Top Side)
 (PCB BOARD TOLERANCE ±0.05)



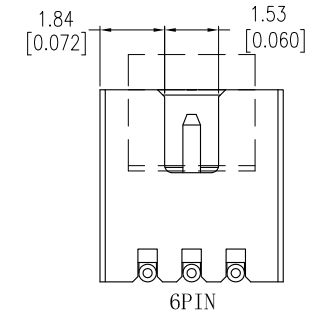
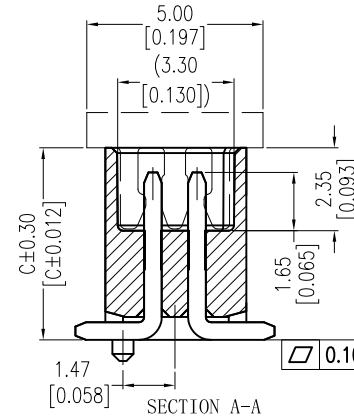
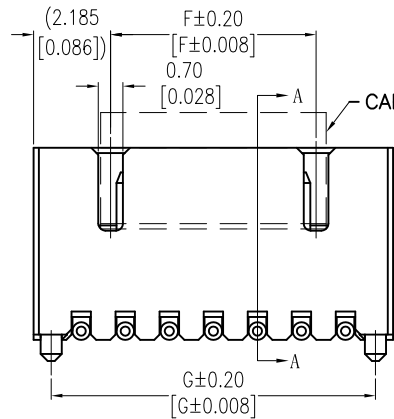
Ordering Information

3651-P XXX - XXX XX R0X

No.of Pins	Height of Housing	Plating	Packing
006: 06 Pin	039: 3.95	G0=Gold Flash	R=Tape&Reel
010: 10 Pin	054: 5.45	G3=10u"Gold	
012: 12 Pin	059: 5.95	G4=15u"Gold	
014: 14 Pin	093: 9.35	G5=30u"Gold	
016: 16 Pin		SM=Matle Tin	
018: 18 Pin			
020: 20 Pin			
022: 22 Pin			
024: 24 Pin			



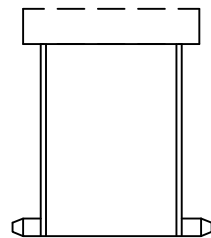
W/T POST



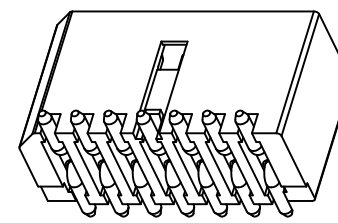
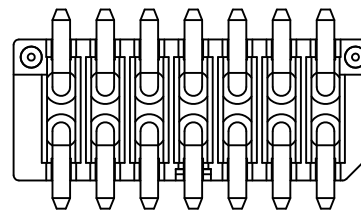
3651-PXXX-XXXXX02	W/O POST
3651-PXXX-XXXXX01	W/T POST

24	16.45	13.75		15.80	12.08	15.45
22	15.20	12.50		14.55	10.83	14.20
20	13.95	11.25	9.35	13.30	9.58	12.95
18	12.70	10.00	5.95	12.05	8.33	11.70
16	11.45	8.75	5.45	10.80	7.08	10.45
14	10.20	7.50	3.95	9.55	5.83	9.20
12	8.95	6.25		8.30	4.58	7.95
10	7.70	5.00		7.05	3.33	6.70
6	5.20	2.50		4.55		4.20
Pos.	A	B	C	D	F	G

Pos	Part No.	E
6-10PIN	CAP3651-G202	3.60
12-24PIN	CAP3651-G201	6.40



W/O POST



REV	DATE	MODIFICATION DESCRIPTION	CHANGE	OPERATION		DRAW		DATE	SCALE	FIT	PART NO.	TITLE:
				X.X	±0.40	DingWenMin	2016.10.25					
				X.XX	±0.25	CHECK		DATE			3651-PXXX-XXXXX0X	1.25mm BTB MALE CONN, SMT TYPE
				X.XXX	±0.15							
A0	2016/10/25	NEW	----	Angle	± 3'	APPROVE		DATE				Customer NO.
				DIM	TOL							